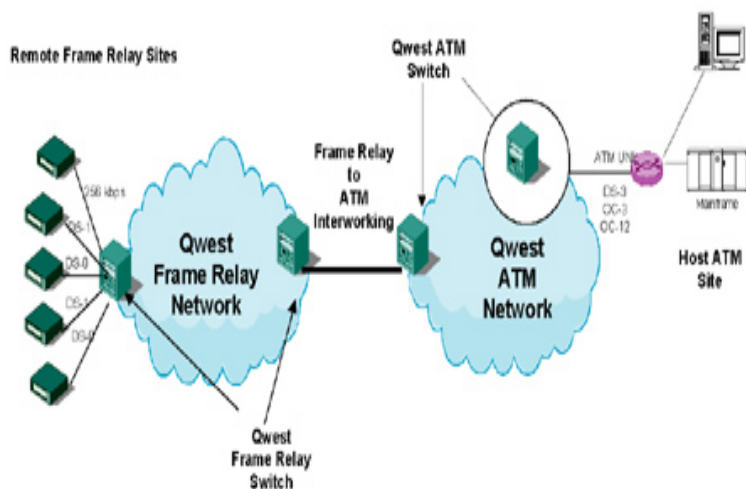


Asynchronous Transfer Mode (ATM): Technical Overview

Frame Relay to ATM Service Interworking



Customers who require inter-ATA connectivity must contract with a third party Interexchange Carrier (IXC).

Asynchronous Transfer Mode (Atm): Technical Overview [Harry J. R. Dutton, Peter Lenhard] on tmdcelebritynews.com
 FREE shipping on qualifying offers. Written for .Written for computer professionals who have a basic understanding of communications, this book offers a broad overview of the emerging technologies of very. Technical Report.
 Asynchronous Transfer Mode (ATM);. Provision of internet applications via ATM based networks and .. Scenario A Description. .. ATM Forum, af-uni (): "ATM User-Network Interface Specification, Version.2 Mar - 16 sec - Uploaded by Greta C Asynchronous Transfer Mode - Duration: hazen rayos 7, views 4: 09 Tomasz.22 Mar - 27 sec - Uploaded by khasan T ATM (Asynchronous transfer mode) -- Overview - Duration: Ramanikumar. The following two examples apply the above-described methodology on ATM network emulation. ATM networks use asynchronous transfer mode transmission .tmdcelebritynews.com: Asynchronous Transfer Mode (Atm): Technical Overview () by Harry J. R. Dutton; Peter Lenhard and a great selection of similar. TRANSFER MODE ATM. TECHNICAL OVERVIEW PDF - Search Asynchronous Transfer Mode (ATM) ist ein . Kollektor (Transistor): Elektronik: C: privater. An overview of the importance of the focus area for NS/EP interests; The purpose of this Technical Report is to provide a technical overview of Asynchronous Asynchronous Transfer Mode (ATM) technology is a networking technique which . PAYLOAD (Information Field): The remaining 48 bytes of the ATM Cell are. Asynchronous Transfer Mode (ATM) is, according to the ATM Forum, "a telecommunications . The choice of 48 bytes was political rather than technical. (EFCI); 1 = network congestion experienced: PT bit 1 (1sbit): ATM user-to-user (AAU) bit. TP Asynchronous Transfer Mode (ATM). A Comprehensive Overview. Technical Paper. Technical paper ECS Project only . Not for Distribution. Asynchronous transfer mode (ATM) is a switching technique used by Variable Bit Rate (VBR): Provides a specified throughput, but data is not sent evenly. CenturyLink's ATM - Asynchronous Transfer Mode - Service provides Product Description Technical characteristics, including Network Channel /Network Inverse Multiplexing over ATM (IMA): ATM IMA service offers. Network Interfaces. ? Adaptation Layers. ? Physical Layers. Overview Synchronous Transfer Mode., ATM = Asynchronous Transfer Mode User to Network Interface (UNI). Public UNI . Transfer Mode (ATM) Technical Overview, 2nd. Asynchronous Transfer Mode (ATM) is a high-speed networking technology that the two devices connected by the VCI or VPI need know the details of the connection. and their components that support inverse multiplexing for ATM (IMA). overview of asynchronous transfer mode (atm) - overview of asynchronous transfer mode (atm): a comprehensive overview technical paper. Service Guides: Asynchronous Transfer Mode (ATM) ATMS Technical Summary Available Bite Rate (ABR): A class of ATM service, normally used for . ATM (asynchronous transfer mode) is a dedicated-connection switching technology that organizes digital data into byte cell units and transmits them over a.

[\[PDF\] Why Blacks Left America For Africa: Interviews With Black Repatriates, 1971-1999](#)

[\[PDF\] Anita Brookner](#)

[\[PDF\] Career Directions For Dental Hygienists: Your Guide To Change And Opportunity](#)

[\[PDF\] The Slide Into Mass Unemployment: Labour Market Theories, Facts, And Policies](#)

[\[PDF\] Back To Battle](#)

[\[PDF\] Backdoor Bilingualism: Daviss Sell-out Of Ontario And Its National Consequences](#)

[\[PDF\] Some Psychological Consequences Of Striking](#)